



FINITURA E FISSAGGIO

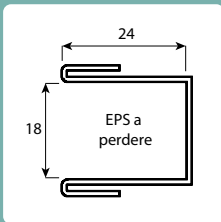
1 Corpo in EPS (CAM)

EPS conforme alla percentuale di riciclato prevista dai CAM, con un valore di conducibilità termica pari a $0,034 \text{ W/m}^2\text{k}$

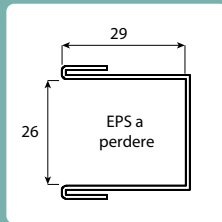
2 Legno

3 Area a rasare

4 Pre-guida avvolgibile



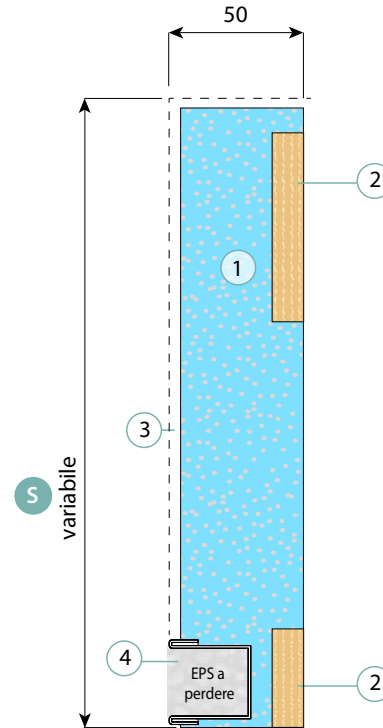
Pre-guida 2



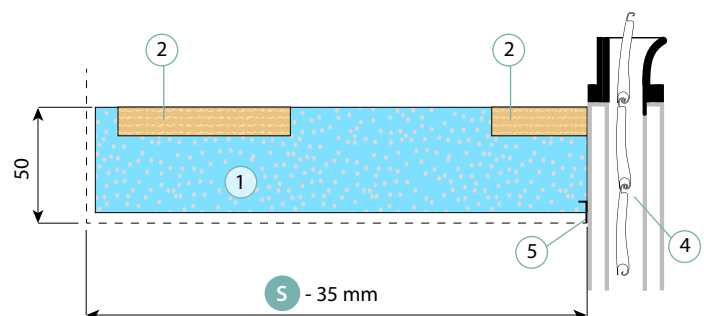
Pre-guida 5

5 Profilo in alluminio

tiquadra
AVVOLGIBILI



TRAVERSO SUPERIORE

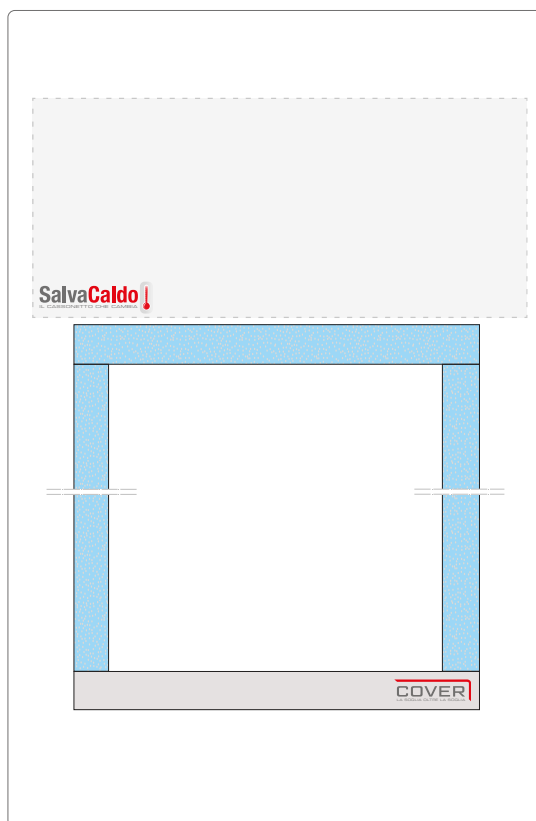
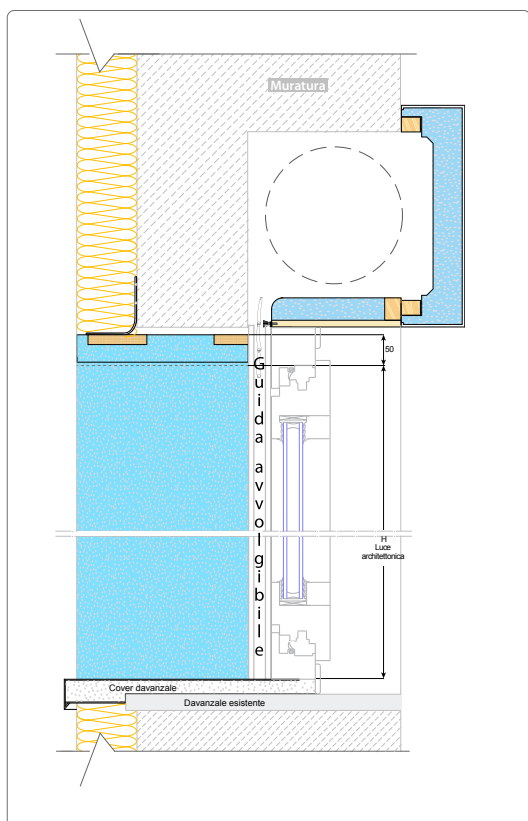


SCARICA LA SCHEDA IN PDF

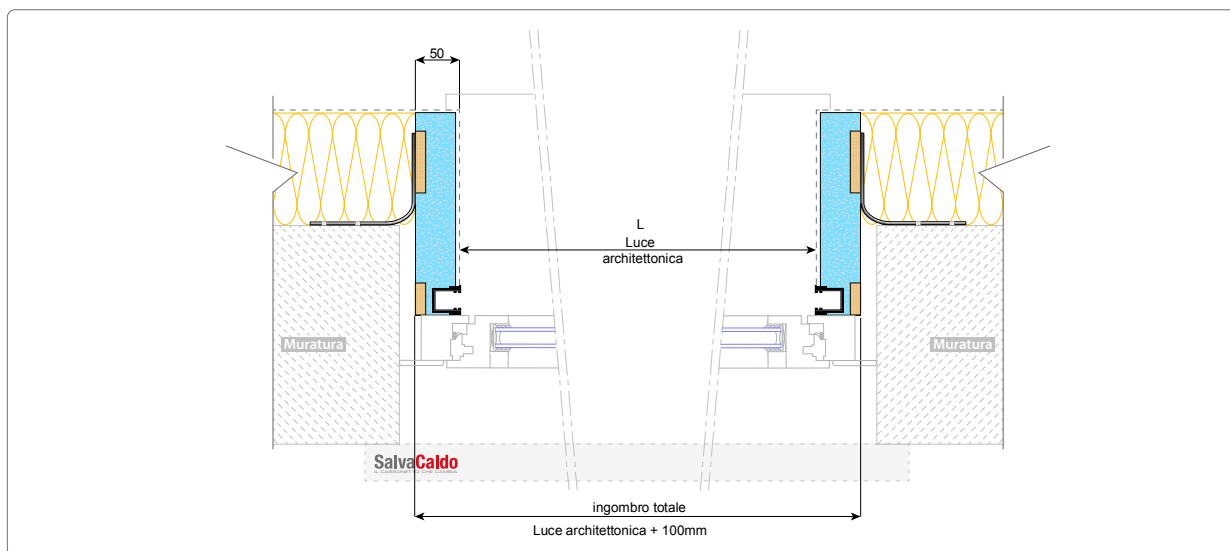
inquadra il QR CODE con la fotocamera dello smartphone

SEZIONE VERTICALE

PROSPETTO INTERNO



SEZIONE ORIZZONTALE



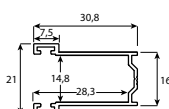
ACCESSORI

GUIDA ALL.

guida 14 per pre-guida 2
guida 101 per pre-guida 5

AVVOLGIBILI MIGNON

GUIDA 14
alluminio ossidato
argento



AVVOLGIBILI STANDARD

GUIDA 101
alluminio ossidato
argento

